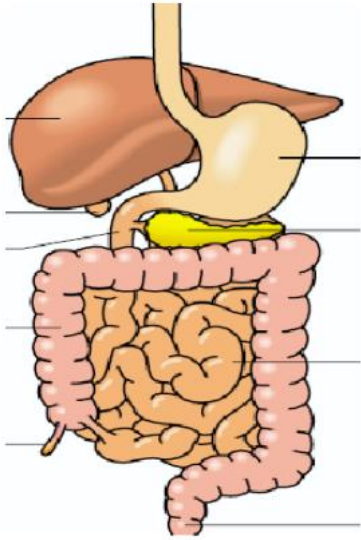


Digestion is:



What is the purpose of bile:



Explain how enzymes digest food using the lock and key theory:

Explain why enzymes have a 'favourable' pH:

Absorption is:

Explain how the small intestine is adapted for efficient exchange:

Enzyme	Substrate	Products	Produced by	Favourable pH
Amylase				
Protease				
Lipase				

