



## Parent Briefing: Thursday 1<sup>st</sup> April

### CONTACTING SCHOOL

[covid19@ca.rklt.co.uk](mailto:covid19@ca.rklt.co.uk) for Covid related matters, questions, or messages. **Please continue to inform us of all positive Covid cases for students.**

[info@ca.rklt.co.uk](mailto:info@ca.rklt.co.uk) for all other matters.

[attendance@ca.rklt.co.uk](mailto:attendance@ca.rklt.co.uk) OR **0113 5323810 option 0** (please contact us on the first day of absence before 8:30am detailing symptoms of illness)

### SUMMER TERM

School opens again for the Summer term on **Monday 19<sup>th</sup> April** at the normal time for each year group. Please note in advance that Monday 3<sup>rd</sup> May is a Bank Holiday and so school will be closed.

### COVID-19: REPORTING POSITIVE TEST RESULTS OVER THE EASTER HOLIDAYS

It is important that you inform us of a positive case **during the first few days of the Easter holidays** if either symptoms or a positive home LFD test occurred within 2 days of your child(ren) being in school.

For example, if your child displays symptoms on Friday 2<sup>nd</sup> April and subsequently tests positive by a PCR test, then you must inform us ASAP so that we are able to identify close contacts from Wednesday 31<sup>st</sup> March and Thursday 1<sup>st</sup> April if they were in school. If your child displays symptoms on Saturday 3<sup>rd</sup> April then we must identify close contacts from Thursday 1<sup>st</sup> April.

Please contact us via the [covid19@ca.rklt.co.uk](mailto:covid19@ca.rklt.co.uk) email address **in addition** to completing your test result on ARBOR.

Where symptoms or a positive home LFD test occurred more than 2 days since the person was last at their education setting, contact tracing by us is not required. Where this is the case, staff, students, parents and carers should follow contact tracing instructions provided by NHS Test and Trace. **However, please do still report the result to us via ARBOR.**

Crawshaw Academy, Robin Lane, Pudsey, Leeds LS28 9HU  
Tel: 0113 5323810 | Email: [info@ca.rklt.co.uk](mailto:info@ca.rklt.co.uk) | [www.crawshawacademy.org.uk](http://www.crawshawacademy.org.uk)  
Principal: Mr A Daly

Crawshaw Academy is part of Red Kite Learning Trust, a charitable company limited by guarantee registered in England and Wales with company number 7523507. Registered office address: Arthurs Avenue, Harrogate HG2 0DZ.





## LATERAL FLOW DEVICE TESTING:

### Home Testing for Students over the Holidays:

Please ensure that **students to continue to test twice weekly over the Easter holidays. This would be, for example, on a Monday and Thursday.**

Please can your child(ren) undertake a lateral flow test on Sunday 18<sup>th</sup> April evening or Monday 19<sup>th</sup> April morning before they return to school for the start of the new term.

A reminder that a student should continue to undertake their LFD tests **even if they are self-isolating as a close contact**. This is so that any asymptomatic cases can still be picked up and acted upon within the household to break the chain of transmission.

We must have a record of the result of each test that a student does. Please add this via the Arbor Parent Portal <https://crawshaw-academy.uk.arbor.sc/?/home-ui/index> or the Arbor App. Full instructions of how to add results via Arbor were sent to Parents in a separate email (Years 7,8,10,11,12,13 on Thursday 18<sup>th</sup> and Year 9 on Friday 19<sup>th</sup> March). Remember that each test must be logged with the NHS following the instructions in the leaflet / email.

Please remember that a child should not do an LFD test if it is within 90 days of a positive PCR test or date of first infection.

If you do get a positive result from a home LFD test you will then need to get a full PCR test to confirm this (and if the PCR test is negative students can return to school unless they are already self-isolating as a close contact). This is different from the tests in school where students must isolate for 10 days if they had a positive LFD test.

### Home Testing for Households:

A reminder that if you're a member of a household, childcare bubble of an early years child, a pupil, student or staff of a school, nursery or college, you can get a twice-weekly test. Full details were on last week's Parent briefing.

[https://www.crawshawacademy.org.uk/Covid19/Parent\\_Briefing\\_26th\\_March\\_FRI\\_.pdf](https://www.crawshawacademy.org.uk/Covid19/Parent_Briefing_26th_March_FRI_.pdf)

### Test and Trace support payment for parents:

Parents and carers of children who have been advised to self-isolate by their education setting or by NHS Test and Trace are now able to apply for a Test and Trace Support Payment or discretionary payment of £500, if they meet the eligibility criteria. Again, full



details were on last week's Parent briefing:

[https://www.crawshawacademy.org.uk/Covid19/Parent\\_Briefing\\_26th\\_March\\_FRI\\_.pdf](https://www.crawshawacademy.org.uk/Covid19/Parent_Briefing_26th_March_FRI_.pdf)

<https://www.gov.uk/government/publications/test-and-trace-support-payment-scheme-claiming-financial-support/claiming-financial-support-under-the-test-and-trace-support-payment-scheme>

## YEAR 7 PARENTS' EVENING

Parents' Evenings for Year 7 will be split over two evenings:

**Thursday 22<sup>nd</sup> April** – forms groups 7JG, 7CDA, 7KSM, 7KRY (booking opens Monday 12<sup>th</sup> April)

**Thursday 29<sup>th</sup> April** – forms groups 7DRH, 7SF, 7FRO, 7ZB (booking opens Monday 19<sup>th</sup> April)

Information on your individual code for School Cloud and how to book will be posted home this week.

## PE – EXTRA CURRICULAR SESSIONS (Key Stage 3)

A central part of the experience at Crawshaw is the huge range of extra-curricular experiences we offer. Following the government's COVID 19 response for people in England through the four-step roadmap route back to a more normal life, the school now wish to extend our offer to allow students to participate in afterschool sport and physical activities while following the measures in our system of controls. We wish to encourage as many of our students as possible to get involved.

To this effect, we would like to offer students the chance to access one afterschool Year group extra-curricular opportunity a week, 3-4pm on the following days throughout the summer term:

Monday - Year 9

Tuesday - Year 8

Wednesday - Year 7

The sessions begin in the w/c Monday 26<sup>th</sup> April (the second week back after the Easter holidays).

The PE department will be giving students a range of activities on the day, to select one they most wish to participate in. Irrespective of previous experience or ability levels, all students are very welcome. Students are asked to wear appropriate Crawshaw PE kit at this time.

---

Crawshaw Academy, Robin Lane, Pudsey, Leeds LS28 9HU

Tel: 0113 5323810 | Email: [info@ca.rklt.co.uk](mailto:info@ca.rklt.co.uk) | [www.crawshawacademy.org.uk](http://www.crawshawacademy.org.uk)

Principal: Mr A Daly

Crawshaw Academy is part of Red Kite Learning Trust, a charitable company limited by guarantee registered in England and Wales with company number 7523507. Registered office address: Arthurs Avenue, Harrogate HG2 0DZ.





We require students who wish to attend these provisions to have **parental consent provided on ARBOR via the Parent Portal or App**. Signing up is very quick and easy to do. An email with the details of how to do this has been sent to parents this afternoon. **The deadline for signing up on Arbor for this is Wednesday 21<sup>st</sup> April.**

## YEARS 11 and 13

### Qualification and grading

We are finalising our policy and procedures for this process following the release of the JCQ guidance at the end of last week. Subject areas are beginning to inform students about when and how evidence will be collected in the coming half term and which evidence will be used that has been previously completed.

For example, GCSE English Assessments will be occurring in class during the weeks beginning 19th April, 3rd May, 17th May and 24th May and these will contribute to the final grades for both English Language and Literature.

We will continue to inform parents about the process as appropriate after Easter and will post the most recent information on our website here:

<https://www.crawshawacademy.org.uk/Return-to-School-March-2021/?skipHAP=y> - select the link on the left hand side.

### Attendance and provision for the 2021 Summer term

The government have now provided some guidance as to expectations for attendance and provision for Year 11 and Year 13 students in the summer term. Now that this is available to us, we will be considering our plans to provide opportunities that meet the progression needs of our students and will communicate them to parents and students after Easter.

### PERIPATETIC LESSONS: SUMMER TERM – existing students and new starters

If your child wishes to continue with lessons or you would like to enrol your child, please fill in this form.

<https://forms.office.com/Pages/ShareFormPage.aspx?id=xGL72LHrcE2snrs6Z-u4wdVpe9UHRu1PoW6T7w81M3FUNVpSMVM4VIFJRU4zM0JMQjBTWFdQSEUzSi4u&sharetoken=ycjrspr6qvYZNEPVJLg>

**Kind regards**  
**Crawshaw Academy**

---

Crawshaw Academy, Robin Lane, Pudsey, Leeds LS28 9HU  
Tel: 0113 5323810 | Email: [info@ca.rklt.co.uk](mailto:info@ca.rklt.co.uk) | [www.crawshawacademy.org.uk](http://www.crawshawacademy.org.uk)  
Principal: Mr A Daly

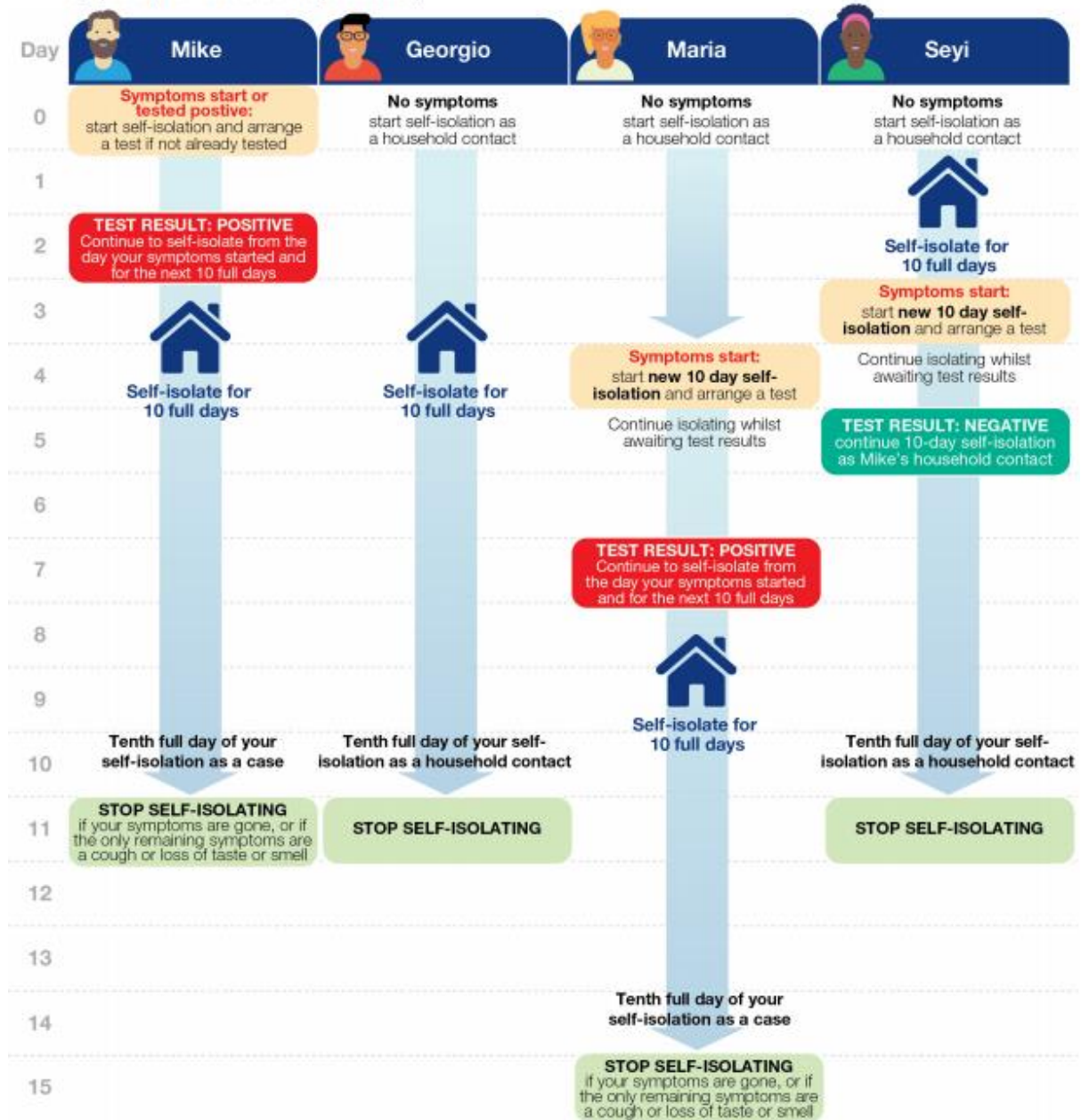
Crawshaw Academy is part of Red Kite Learning Trust, a charitable company limited by guarantee registered in England and Wales with company number 7523507. Registered office address: Arthurs Avenue, Harrogate HG2 0DZ.



# Stay at home and self-isolate.

Please see [detailed guidance online](#).

**Mike's household:** In this example, Mike lives with Georgio, Maria and Seyi. Mike is the first case of COVID-19 in this household. He and everyone in the household begin self-isolating from the day Mike's symptoms start (or if he had no symptoms, from the date of his positive test).



### Self-isolate for 10 full days.

You need to self-isolate from the day the first person in your household started symptoms and for the next 10 full days. If they did not have symptoms, self-isolate from the day of their test and for the next 10 full days.

### To self-isolate means:

Do not go to work, school, or public areas and do not use public transport or taxis. Only leave your home to get to your test if you need to, observe strict social distancing advice and return immediately afterwards.

