



Parent Briefing: Friday 23rd April

CONTACTING SCHOOL

covid19@ca.rklt.co.uk for Covid related matters, questions, or messages. **Please inform us of all positive Covid cases for students.**

info@ca.rklt.co.uk for all other matters.

attendance@ca.rklt.co.uk OR **0113 5323810 option 0** (please contact us on the first day of absence before 8:30am detailing symptoms of illness)

MONDAY 3rd MAY

Please note in advance that Monday 3rd May is a Bank Holiday and so school will be closed.

COVID-19: LATERAL FLOW DEVICE TESTING: Home Testing for Students:

The LFD tests done at home have proved to be an effective screen for students that do not have any symptoms. Before Easter they did pick up several asymptomatic cases which allowed action to be taken. We have, this week, provided more LFD tests for students and will continue to distribute them as we receive them from the government.

Below are some of the key points to remember about the LFD testing:

- LFD testing is **ONLY** for individuals who have no symptoms. **If your child has symptoms, then you must book a PCR test.**
- students should test twice weekly on a Sunday night / Monday morning and Wednesday night / Thursday morning.
- a student should continue to undertake their LFD tests **even if they are self-isolating as a close contact.**
- a child should **not** do an LFD test if it is within 90 days of a positive PCR test or date of first infection.
- If you do get a positive result from a home LFD test you will then need to get a full PCR test to confirm this (and if the PCR test is negative students can return to school unless they are already self-isolating as a close contact).



- We must have a record of the result of each test that a student does. Please add this via the Arbor Parent Portal <https://crawshaw-academy.uk.arbor.sc/?/home-ui/index> or the Arbor App.
- Each test must be logged with the NHS following the instructions in the leaflet / email.

YEARS 11 and 13

Qualification and grading

Year 11 and 13 parents and students will receive a separate communication in the coming days with updates to the process. However, parents should be aware that the **collection of new assessment information has already begun in lesson time**. It is very important that parents ensure full attendance of their child at school; these assessments contribute directly to the final grading judgement which can only be evidence based. There is some mitigation planning for students should they have to self-isolate or be affected by Covid illness in line with the Centre Policy.

Year 11 and 13 – suspension of timetable

Students must be available to come into school for assessments **until 18th June**.

They will not, however, be required to attend school for regular timetabled lessons after Friday 28th May (last Friday of this half term). From this date the timetable will be suspended for students in these year groups. For Year 11 students there will be a series of support programmes, including careers preparation as well as bridging and induction activities for our Sixth Form. Full details of the provision following the half term holiday will follow in due course.

We will post the most recent information on our website here:

<https://www.crawshawacademy.org.uk/Return-to-School-March-2021/?skipHAP=y> - select the link on the left-hand side.

YEAR 7 PARENTS' EVENING

Last night saw the virtual Parents' Evening for forms groups 7JG, 7CDA, 7KSM, 7KRY. The other forms (7DRH, 7SF, 7FRO, 7ZB) have their evening next week on **Thursday 29th April** (booking is now open).

These are the final subject Parents' evenings of the year and we intend, later in the year, to provide an opportunity to receive parental views to the virtual approach, implemented as a direct response of the Covid pandemic, as we look ahead to planning for next year and consider how these evenings are run going forward.



PE – EXTRA CURRICULAR SESSIONS (Key Stage 3)

A reminder that Extracurricular activities start in PE after school next week for Key Stage 3 from 3-4pm on the following days throughout the summer term:

Monday - Year 9

Tuesday - Year 8

Wednesday - Year 7

The sessions begin in the w/c Monday 26th April (the second week back after the Easter holidays).

If you have not yet provided consent for attendance, then this is a last call to do so. Students who wish to attend these provisions **must** have parental consent provided on **ARBOR via the Parent Portal or App**. Signing up is very quick and easy to do. An email with the details of how to do this has been sent to parents on Thursday 1st April.

SEXUAL HARASSMENT, ABUSE AND VIOLENCE

In recent weeks there has, quite rightly, been much attention given to the issue of sexual harassment, abuse, and violence. This has been an issue of national significance, and we have taken this time to reflect on what this means for our own community.

Further information can be found via the link to our website, including details of the policies we have in place, the support available to our students, our school values and details of the new NSPCC/DfE helpline that was launched on 1st April. The helpline will provide both children and adults who have experienced sexual abuse in schools with support and advice, including onward action such as contacting the police if they wish to. The helpline will also provide support to parents and professionals. Anyone who gets in touch through this dedicated helpline will also be signposted to other relevant support services available, including Childline, which provides ongoing support and counselling to children and young people.

The dedicated and confidential NSPCC helpline – Report Abuse in Education can be reached on 0800 136 663 or by email at help@nspcc.org.uk.

Link to the full school communication: [Sexual harassment, Abuse and Violence - website](#)

THE BIG ASK

The Children's commissioner for England, Dame Rachel de Souza, is undertaking the largest ever survey of school age children in England. It is called The Big Ask and is now live at <http://thebigask.uk/>.



We have circulated the details to all our students via email; please could you encourage your child(ren) to respond to the survey using the link above. It will only take around 7 minutes to complete.

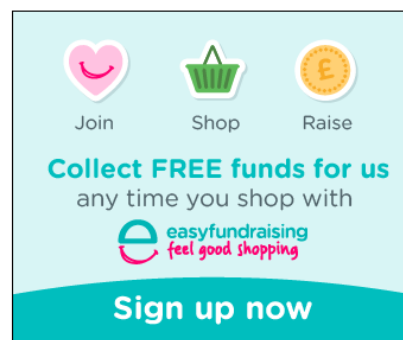
The survey will be accompanied by an online assembly introduced by England and Manchester United footballer Marcus Rashford and this will be shown to students in form time over the next few weeks.

The results from this survey will help government to identify the barriers preventing children from reaching their potential, put forward solutions and set ambitious goals for the country to achieve.

SUPPORTERS OF CRAWSHAW ACADEMY – PTA (S.O.C.A.)

Supporters of Crawshaw Academy is registered with easyfundraising. So, although we've been unable to get together and hold fundraising events in person since March 2020, we can continue to raise free funds with easyfundraising, at no extra cost to you.

In the coming weeks, if you're buying new school uniform, PE kits, rucksacks and stationery online, please remember to shop via the easyfundraising website or app. There are thousands of retailers on easyfundraising, including M&S, John Lewis, Clarks, WHSmith and The Works, who will all give free donations to Supporters of Crawshaw Academy when you shop with them.



If you're not already signed up, it only takes a few minutes, then you can begin using the easyfundraising website or app straightaway - simply visit easyfundraising first and then shop online as normal. This will be an enormous help to us, at no extra cost to yourself.

Please visit our easyfundraising page to get started:

https://www.easyfundraising.org.uk/causes/crawshawacad/?utm_campaign=raise-more&utm_content=bts-e

If just 3 new people sign up for easyfundraising before the end of May they will enter us into a prize draw for £250.

Kind regards
Crawshaw Academy

Crawshaw Academy, Robin Lane, Pudsey, Leeds LS28 9HU
Tel: 0113 5323810 | Email: info@ca.rklt.co.uk | www.crawshawacademy.org.uk
Principal: Mr A Daly

Crawshaw Academy is part of Red Kite Learning Trust, a charitable company limited by guarantee registered in England and Wales with company number 7523507. Registered office address: Arthurs Avenue, Harrogate HG2 0DZ.

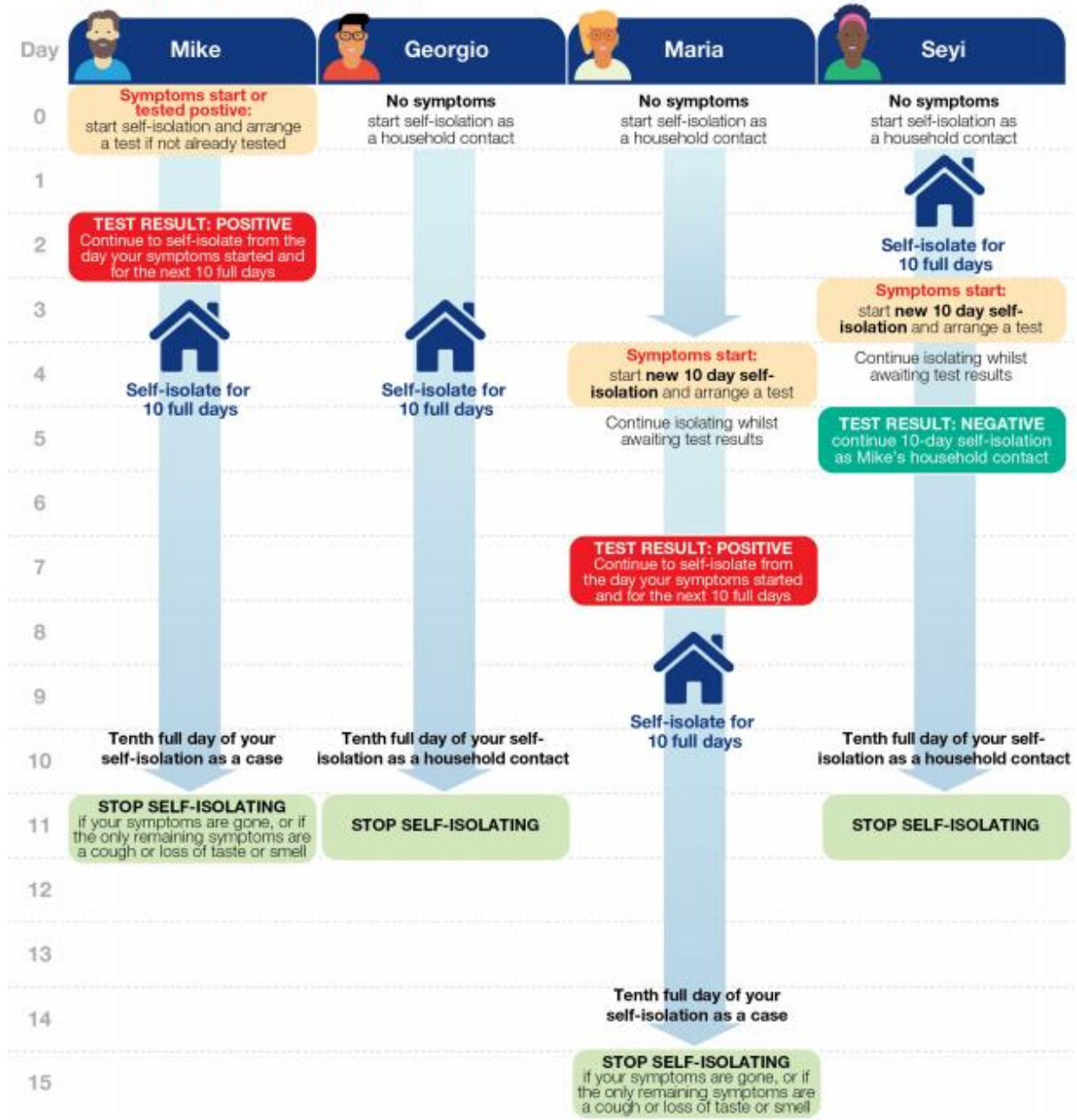




Stay at home and self-isolate.

Please see [detailed guidance online](#).

Mike's household: In this example, Mike lives with Georgio, Maria and Seyi. Mike is the first case of COVID-19 in this household. He and everyone in the household begin self-isolating from the day Mike's symptoms start (or if he had no symptoms, from the date of his positive test).



Self-isolate for 10 full days.

You need to self-isolate from the day the first person in your household started symptoms and for the next 10 full days. If they did not have symptoms, self-isolate from the day of their test and for the next 10 full days.

To self-isolate means:

Do not go to work, school, or public areas and do not use public transport or taxis. Only leave your home to get to your test if you need to, observe strict social distancing advice and return immediately afterwards.

