



# KS4 Subject Information Pages





## Links to KS4 Subject Information Pages

[Art and Design Subjects](#)

[GCSE PE](#)

[GCSE History](#)

[Health and Social Care](#)

[GCSE Photography](#)

[GCSE French](#)

[GCSE Geography](#)

[Hospitality and Catering](#)

[GCSE Media Studies](#)

[GCSE Drama](#)

[GCSE Religious Studies](#)

[Business and Computing](#)

[GCSE STATISTICS](#)

[Compulsory Subject Information](#)





# The Key Stage 4 Curriculum

The Key Stage 4 Curriculum consists of a compulsory 'core', in which every student must study the core subjects of English, Mathematics and Science – these are crucial subjects in which to gain GCSEs or other certificates. The core curriculum in these subjects will produce five GCSE grades (six for Separate Science students).

The 'core' also includes the Applied Learning Specialism subject that each student began at the start of Year 9. There are no changes to these subjects, and they do not form part of the options process.

## Compulsory subjects

Subject	Number of <u>GCSEs</u>
English (Language and Literature)	2
Mathematics	1
Science	2 or 3 depending on pathway
Core PE	None-subject is not examined
Curriculum for Life ( <u>PSHE/RSE</u> )	None-subject is not examined

[English Language and Literature](#)

[Mathematics](#)

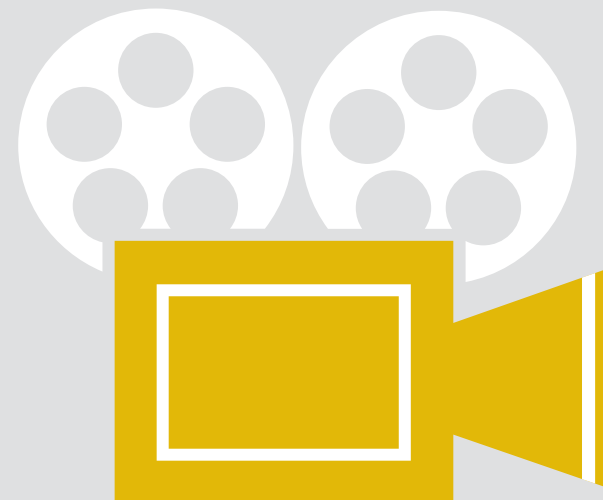
[Combined Science](#)

[Back to subject menu](#)

[Triple Science](#)



# ENGLISH FACULTY OPTION SUBJECTS





# GCSE Media Studies (EDUQAS)

## AIMS:

To study, in depth, the conventions of newspapers, film, video games, radio, magazines, advertising/marketing, television, music and social media. We will analyse these media forms by focusing on their language, representation, audience and industry.

To create an individual media production for an intended audience, which shows sound understanding of the concepts above.

## ASSESSMENT:

### Component 1 – Exploring the Media (40%)

Written examination – 1 hour 30 minutes

- Section A – two questions assessing your knowledge of Language and Representation in print media.
- Section B – two questions assessing your knowledge of Industries and Audiences.

### Component 2 – Understanding Media Forms (30%)

Written examination – 1 hour 30 minutes

- Section A – Television
- Section B – Music (videos and online)

For both sections, you must answer one question on Industries or Audiences, and one question on Language or Representation.

For Section A, you will watch an extract from a set television programme in the exam, and then answer questions on it.

### Component 3 – Creating Media Products (30%)

Non-exam assessment – mostly completed in the classroom.

This gives you the opportunity to create an individual media production for an intended audience.

## FOR FURTHER INFORMATION:

Speak to Mrs Button

## CONTENT:

- Component 1 – Exploring the Media
- You will have the opportunity to study a range of print media, including
  - Magazines
  - Film posters
  - Newspapers
  - Print advertisements.
- You will also have the opportunity to study film, radio and video games.
- Component 2 – Understanding Media Forms
- You will have the opportunity to study television and music.
- Component 3 - Creating Media Products

You will have the opportunity to create print-based marketing for a new film of a particular genre, as specified by the exam board.

## PROGRESSION ROUTE:

- A-Level Media Studies
- Degrees in Media Studies, Journalism, PR, Communications, Events Management.

[Back to subject menu](#)

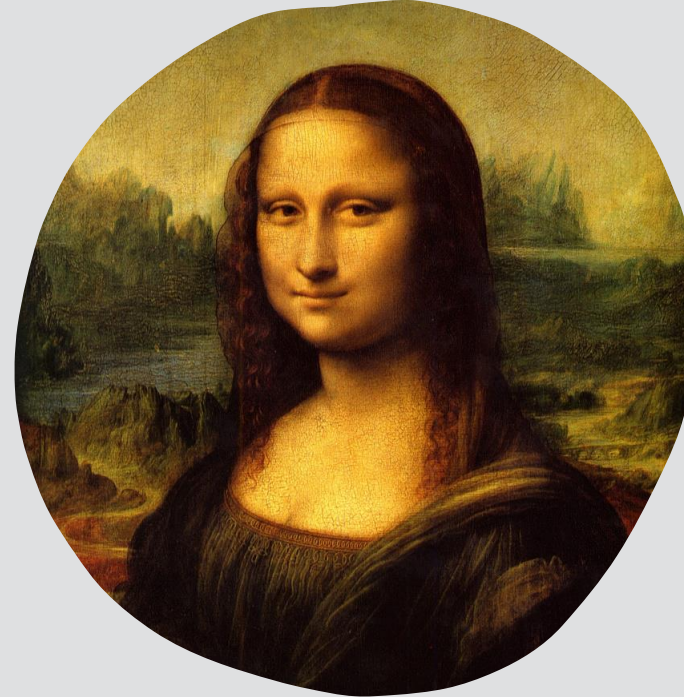
## CAREER OPPORTUNITIES:

- ·Advertising
- ·Marketing
- ·Journalism
- ·Publishing
- ·Social media management
- ·TV/radio production
- ·Public relations
- ·Events management
- ·Web content manager
- ·Writer





# ART AND DESIGN SUBJECTS





# Art and Design subject combinations

**APPLIED OPTION:** If you are ALREADY studying Art & Design for your Year 9 Applied Specialism, you **MAY NOT** choose any of the following GCSE Art & Design options:

- **Fine Art, Graphics, Textiles or 3D Design.** You **MAY**, however, choose Photography.

You may only select **one** of the following GCSE Art & Design specialisms: Fine Art, 3D Design, Graphics, Textiles as a 1st preference. You may choose a second specialism as a **reserve**. You cannot study more than one of these GCSE Art & Design specialisms in Key Stage 4.

***You MAY choose Photography alongside any of these GCSE Art & Design specialisms (Fine Art, 3D Design, Graphics, Textiles) – this combination is allowed.***

[Back to subject menu](#)



# GCSE Art and Design: Fine Art

## AIMS:

The course examines the way artists and designers have worked and looks at how their approach might influence their own work. It explores various skills, techniques and technologies. This exciting practical course enables the use of various art forms including Photography and lots of experimentation.

**Qualification: AQA GCSE Art and Design – Fine Art**

## CONTENT:

GCSE Fine Art offers a broad range of practical activities, which include: Photography, ICT, Drawing, Painting, Mixed Media, Printmaking and Three-Dimensional Design.

Students develop their own sketchbook and/or design sheets throughout the course. This is a source of ideas for projects and a collection of personal research and development. The study of other artists and research culminates in final pieces, which demonstrate students' personal strengths and interests.

## CAREER OPPORTUNITIES:

Creative Industries are booming employing over 2 million in the UK and forecasted to be one of the biggest growing industries in the near future. Look at the following website for an extensive list of careers including Interior Designer, Animator, Special Effects Designer:

<http://www.studentartguide.com/articles/art-careers-list>

## PROGRESSION ROUTE:

Students can progress onto A level Fine Art and/or Photography. This can lead to studying an Arts Foundation course and onto degree at colleges/universities.

## ASSESSMENT:

**60 % Portfolio of Work**  
**40% Externally Set Task (exam)**

## FOR FURTHER INFORMATION:

Speak to: Mrs Haxby or Miss Summerfield Weblinks: Be inspired: <http://www.thisiscolossal.com/>

Careers: [http://www.prospects.ac.uk/types\\_of\\_jobs\\_creative\\_arts\\_and\\_design.htm](http://www.prospects.ac.uk/types_of_jobs_creative_arts_and_design.htm)

Guide to best Universities for Arts Degrees: <http://www.theguardian.com/education/table/2013/jun/04/university-guide-art-design>

[Back to subject menu](#)





# GCSE Art and Design: 3D Design

## AIMS:

This 3D Design qualification gives students an opportunity to engage with creativity and innovation to further develop their current learning at Key Stage 3 in Design and Art, broadening their designing and practical skills. This GCSE covers a wide range of activities based on research, designing and making products that are manufactured using materials such as woods, metals, papers/card and plastics.

Three-dimensional design is the design, prototyping and modelling or making of functional and aesthetic products and objects. This exciting course is especially suited for students who like to design and make products.

Future Prospects/Career Options: The creative industries in the U.K are rapidly growing. They contribute £92 billion to the economy and employ over 3 million people. People with creative skills are highly valued in a rapidly changing world of work.

**Qualification: GCSE Art & Design - 3D Design, Exam Board AQA**

## CONTENT:- Areas of study

In Component 1 and Component 2 students are required to work in one or more area(s) of three-dimensional design, such as those listed below:

- *architectural design*
- *product design*
- *jewellery and body adornment*
- *interior design*
- *exhibition design*
- *designs for theatre, film and television.*

They may explore overlapping areas and combinations of areas.

## ASSESSMENT:

Unit 1: Portfolio of work. Personal themed project set by student - 60% of total mark.

Unit 2: Externally set brief – project set by AQA - 40% of total mark. 10 hours of sustained focused study (exam). NO WRITTEN EXAM.

Architecture

Product Design

Jewellery

Interior Design

Exhibition Design



## PROGRESSION ROUTE: AS/A2 LEVEL(S):

Art and Design, Product Design/Graphic Design, Photography. This can lead to studying an Arts Foundation course and onto degree at colleges/universities.

**CAREER OPPORTUNITIES:** Architect, Animator, Car Designer, Product Designer, Fashion Designer, Jewellery Designer, Graphic Designer, Furniture and Industrial Designer, Mechanical and Structural Engineering, Commercial Designer, Biomedical Engineering, Measurement & Control, Engineering Backstage Theatre Work, Aircraft Engineering, Cabinet & Furniture Making, Agricultural Engineering, Three Dimensional Design, Web Design, Interior Design, Costume Design, Set Design, Fashion Design, Exhibition Design

FOR FURTHER INFORMATION: Speak to: Mrs Haxby

Weblinks: Be inspired: <http://www.yankodesign.com> Careers: [http://www.prospects.ac.uk/types\\_of\\_jobs\\_creative\\_arts\\_and\\_design.htm](http://www.prospects.ac.uk/types_of_jobs_creative_arts_and_design.htm)

Guide to best Universities for Arts Degrees: <https://www.thecompleteuniversityguide.co.uk/league-tables/rankings?s=Art%20%26%20Design>

[Back to subject menu](#)





# GCSE Art and Design: Graphic Design

## AIMS:

Graphic communication the exciting process of designing image and text to convey information, ideas, meaning and emotions in response to a given or self-defined brief. This is an exciting course suitable for creative and practical minded individual.

Future Prospects/Career Options: The creative industries in the U.K are rapidly growing. They contribute £92 billion to the economy and employ over 3 million people. People with creative skills are highly valued in a rapidly changing world of work. There are hundreds of specialisms but it is competitive and you need to work hard.

**Qualification: GCSE Art & Design, Exam Board AQA**

## ASSESSMENT:

**Unit 1:** Portfolio of work. Personal themed project set by student - 60% of total mark.

**Unit 2:** Externally set brief – project set by AQA - 40% of total mark. 10 hours of sustained focused study (exam).

***NO WRITTEN EXAM.***



## PROGRESSION ROUTE: AS/A2 LEVEL(S):

Art and Design, Product Design/Graphic Design, Photography. This can lead to studying an Arts Foundation course and onto degree at colleges/universities.

## CAREER OPPORTUNITIES:

Look at the following website for an extensive list of careers including:- Advertising Designer, Graphic Designer, Packaging Designer, Illustrator, Typographer : <http://www.studentartguide.com/articles/art-careers-list>

## CONTENT:- Areas of study

In Component 1 and Component 2 students are required to work in one or more area(s) of graphic communication, such as those listed below:

- communication graphics · design for print · advertising and branding · illustration · package design · typography · interactive design (including web, app and game)

They may explore overlapping areas and combinations of areas.

**FOR FURTHER INFORMATION: Speak to: Mrs Haxby**

Weblinks: Be inspired: <http://www.yankodesign.com> Careers: [http://www.prospects.ac.uk/types\\_of\\_jobs\\_creative\\_arts\\_and\\_design.htm](http://www.prospects.ac.uk/types_of_jobs_creative_arts_and_design.htm)

Guide to best Universities for Arts Degrees: <https://www.thecompleteuniversityguide.co.uk/league-tables/rankings?s=Art%20%26%20Design>

[\*\*Back to subject menu\*\*](#)





# GCSE Art and Design: Textile Design

## AIMS:

Fashion/Textile Design is an exciting and creative course which allows you to explore creativity in textiles, whether it be practical or just as a work of art. This course is suitable for creative and practical minded individuals who are interested in the world of fashion and textile design

Future Prospects/Career Options: The creative industries in the U.K are rapidly growing. They contribute £92 billion to the economy and employ over 3 million people. People with creative skills are highly valued in a rapidly changing world of work. There are hundreds of specialisms but it is competitive and you need to work hard.

**Qualification: AQA GCSE Art and Design – Textile Design**

## CONTENT:

Areas of study

In Component 1 and Component 2 students are required to work in one or more area(s) of textile design, such as those listed below:  
art textiles · fashion design and illustration · costume design · constructed textiles · printed and dyed textiles · surface pattern · stitched and/or embellished textiles · soft furnishings and/or textiles for interiors

They may explore overlapping areas and combinations of areas.

## ASSESSMENT:

Unit 1: Portfolio of work. Personal themed project set by student - 60% of total mark.

Unit 2: Externally set brief – project set by AQA - 40% of total mark. 10 hours of sustained focused study (exam).

NO WRITTEN EXAM.

## CAREER OPPORTUNITIES:

Look at the following website for an extensive list of careers including Interior Design, Fashion Design, Furnishing Design, Fabric Design, Retail :

<http://www.studentartguide.com/articles/art-careers-list>

[http://www.prospects.ac.uk/types\\_of\\_jobs\\_creative\\_arts](http://www.prospects.ac.uk/types_of_jobs_creative_arts)

## PROGRESSION ROUTE: AS/A2 LEVEL(S):

Art and Design, Product Design/Graphic Design, Photography. This can lead to studying an Arts Foundation course and onto degree at colleges/universities.

FOR FURTHER INFORMATION: Speak to: Mrs Haxby

Weblinks: Be inspired: <https://www.studentartguide.com/articles/fashion-design-sketchbooks>

[Back to subject menu](#)





# GCSE Art and Design: Photography

## AIMS:

Photography is a new and exciting course which allows students to pursue ideas in digital photography, moving image as well as photographic manipulation through using photoshop as well as sketchbook work.

**Qualification: AQA GCSE Art and Design – Photography**

## CONTENT:

Students are required to work in one or more area(s) of photography: • portraiture • location photography • studio photography • experimental imagery • installation • documentary photography • photojournalism • moving image: film, video and animation • fashion photography. They may explore overlapping areas and combinations of areas.

Students develop their own sketchbook and PowerPoints throughout the course. The study of other artists and research culminates in final pieces, which demonstrate students' personal strengths and interests.

## CAREER OPPORTUNITIES:

Creative Industries are booming employing over 2 million in the UK and forecasted to be one of the biggest growing industries in the near future. Look at the following website for an extensive list of careers including Photography, Animator, Special Effects Designer:

<http://www.studentartguide.com/articles/art-careers-list>

## PROGRESSION ROUTE:

Students can progress onto A level Photography. This can lead to studying an Arts Foundation course and onto degree courses at colleges/universities.

## ASSESSMENT:

60 % Portfolio of Work  
40% Externally Set Task (exam)

## FOR FURTHER INFORMATION:

Speak to: Miss Craig Weblinks: Be inspired: <http://www.thisiscolossal.com/https://www.creativeblog.com/photography/websites-10121096>

Careers: [http://www.prospects.ac.uk/types\\_of\\_jobs\\_creative\\_arts\\_and\\_design.htm](http://www.prospects.ac.uk/types_of_jobs_creative_arts_and_design.htm)

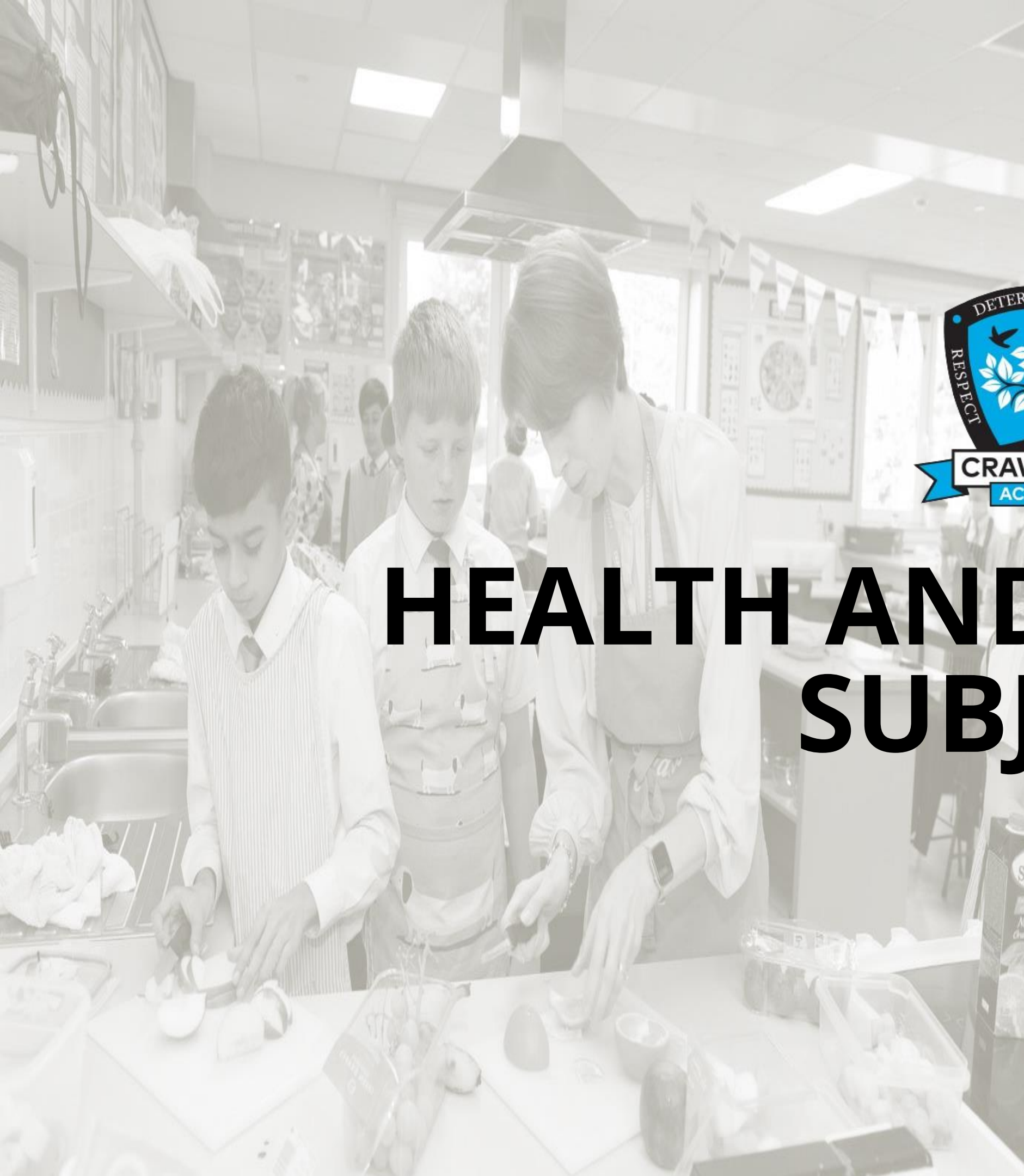
Guide to best Universities for Arts Degrees: <http://www.theguardian.com/education/table/2013/jun/04/university-guide-art-design>

[Back to subject menu](#)





# HEALTH AND WELLBEING SUBJECTS







# Cambridge National-Health & Social Care (level 1/level 2)

## AIMS:

The course is designed to give you an introduction to the health and social care sectors. It will also allow you to develop a range of skills and techniques that will be useful for working life.

## Qualification:

**OCR Cambridge National in Health and Social Care**

## CONTENT:

### RO32 – Principles of care in health and social care

You will learn about the key topics that are important when caring for and protecting people in health and social care. Topics include the rights of service users, person centred values, effective communication and protecting service users.

### RO33 – Supporting individuals through life events

You will learn about growth and development through the life stages and understand the needs of individuals who have been affected by life events.

### RO35 – Health promotion campaigns

You will research health promotion campaigns and learn about their benefits. You will also plan and deliver your own health campaign.

## ASSESSMENT:

The qualification consists of three units that give you the opportunity to develop a broad knowledge and understanding of health & social care at levels 1 and 2.

Units RO33 and RO35 are assessed through internal assessment that are subject to external moderation. They require completion of two pieces of controlled assessment over years 10 and 11

RO33 requires you to conduct an in depth interview with a family member or friend on which to base your controlled assessment.

RO32 is an external assessment. It takes the format of a 1 ½ hour exam which is set and assessed by OCR.

## PROGRESSION ROUTE:

Any roles within the NHS or caring careers. Many students go on to study Health & Social Care at level 3 and then progress on to degree courses at university in nursing, midwifery, teaching, psychology, social work and occupational therapy.

## CAREER OPPORTUNITIES:

About 3 million people work in health and social care, which is one in ten of all paid jobs in the UK. These roles include doctors, pharmacists, nurses, midwives, healthcare assistants, occupational therapists, counsellors, social workers and care assistants. Demand is likely to rise and play a key role in UK society.

[Back to subject menu](#)

## FOR FURTHER INFORMATION: Speak to Mrs Rose

Weblinks: [Cambridge Nationals - Health and Social Care Level 1/Level 2 – J835 - OCR](#)





# EDUQAS L1/2 VOCATIONAL AWARD IN HOSPITALITY & CATERING

## AIMS:

This qualification is designed for learners with an interest in food and cookery. It will provide learners with opportunities to develop skills and gain experience of the hospitality and catering industry. Students will develop a core depth of knowledge and a range of specialist and general skills that will also support progression to further learning and employment.

## Qualification: WJEC Level 1/ 2 Vocational Award in Hospitality & catering

Level 2 (A\*-C grade equivalent) for pupils aiming to do A Levels or other level 3 courses after GCSE.

Level 1 (D-G grade equivalent) for pupils who plan to go onto further level 1 or 2 courses.

## CAREER OPPORTUNITIES:

Employment in hospitality and catering can range from waiting staff, receptionists and catering assistants to chefs, hotel and bar managers and food technologists in food manufacturing.

## PROGRESSION ROUTE:

All of the roles above require further education and training either through apprenticeships or further and higher education. Many of our students have gone on to successfully complete the L3 Professional Cookery Diploma at Leeds City College.

## CONTENT:

**Unit 1** - In this unit, you will learn about the types of providers within the industry, the operation of hospitality and catering establishments and the factors affecting their success. This knowledge will enable you to respond to issues relating to the hospitality and catering industry and provide you with the ability to propose a new provision that could be opened in a given location to benefit the owner and the local community.

**Unit 2** – The purpose of the unit is for learners to safely plan, prepare, cook and present nutritional dishes. In this unit you will gain knowledge of the nutritional needs of a range of client groups in order for you to plan nutritional dishes to go on a menu. You will learn and develop safe and hygienic food preparation, cooking and finishing skills required to produce nutritional dishes.

Practical work will be completed on average once a week. There will be periods around the written exam where less practical takes place.

## ASSESSMENT:

Unit 1 - The Hospitality and Catering Industry – externally assessed written exam

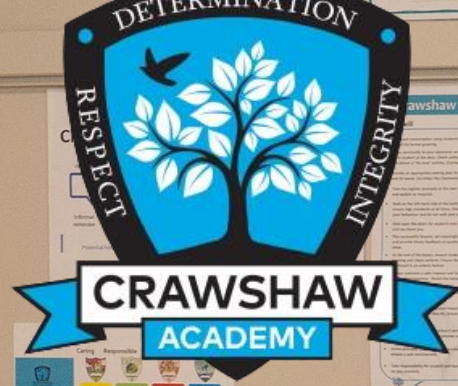
Unit 2 - Hospitality and Catering in Action – internally assessed controlled assessment and practical exam. Learners must complete both units.

FOR FURTHER INFORMATION: Speak to Mrs Rose and Mr Nicholson

[Back to subject menu](#)

Weblinks: <https://www.eduqas.co.uk/qualifications/hospitality-and-catering/wjec-level-1-2-award-in-hospitality-and-catering-specA-from-2016-e+29+11+18.pdf>





# GCSE PHYSICAL EDUCATION (EDEXCEL)

## AIMS:

GCSE Physical Education is a theory qualification which has an element of practical performance included within the syllabus. The majority of learning will be in the classroom with students gaining knowledge about various different aspects of sport, health and exercise. Although there will be practical lessons, it is important to stress that this qualification is not just an extension of core PE, and by its very nature it is quite an academic subject. An interest in all aspects of sport will certainly be beneficial for somebody considering this option.

## Qualification: GCSE Physical Education (Edexcel)

## ASSESSMENT:

Theoretical Component: 60% of grade

- 2 written papers. Paper 1 is worth (36%) and paper 2 (24%).

Practical Component: 40% of grade

- Practical performance in 3 chosen sports worth 30% of final grade
- Individual Personal Exercise Programme (6 weeks) worth 10% of final grade.

## CONTENT:

Students will study:

- ***Fitness and Body Systems (Theory)*** - Applied anatomy and physiology, movement analysis and physical training.
- ***Health and Performance (Theory)*** - Health, fitness and well-being, sport psychology and socio-cultural influences.
- ***Practical Performance (Practical)*** - Assessed on 3 physical activities from a set list. One must be a team sport, one must be an individual sport. Final sport could be either
- ***Personal Exercise Programme (Practical)*** - Set out the aims of the PEP, plan the PEP, carry out the PEP and monitor then evaluate the PEP.

Success in GCSE PE relies upon; good literacy skills, good organisational skills, a keen interest in sport, good learning conduct and a strong desire to 'be the best you can be'.

## FOR FURTHER INFORMATION:

Speak to: The P.E. Department

Weblinks: <https://qualifications.pearson.com/en/qualifications/edexcel-gcses/physical-education-2016.html>

## CAREER OPPORTUNITIES:

Employment opportunities in the sport industry are broad and varied and this qualification could be a great start for anybody wishing to have a career in sport.

## PROGRESSION ROUTE:

As well as being preparation for the A-level Physical Education, GCSE PE allows progression to related qualifications such as Cambridge Technicals in Sport & Physical Activity, BTEC Nationals in Sport or Sports and Exercise Science.

[Back to subject menu](#)



Crawshaw holds the AfPE Quality Mark with distinction  
for Physical Education.

Leeds Sports Award U18 School Sport Winner 2021





# PERFORMANCE SUBJECTS







# GCSE DRAMA (OCR)

## AIMS:

You will apply your knowledge and understanding of Drama when creating, performing, and responding to drama. You will explore a performance text, understanding the social, cultural, and historical context including the theatrical conventions of the period in which it was created. You will also develop a range of theatrical skills and apply them to create performances of your own.

**QUALIFICATION:** OCR Exam board, GCSE Drama

## CONTENT:

- Component 1 Devising Drama - You will research and explore a stimulus, work collaboratively, and create your own devised drama.
- Component 2 Presenting and Performing Texts - You will develop and apply theatrical skills in acting or design by presenting a showcase of two extracts from a play script.
- Component 3 Performance and Response written exam - You will explore a play in the classroom and then write about the Drama skills used showing your knowledge and understanding of performing to an audience. You will analyse and evaluate a live theatre performance.

## ASSESSMENT:

- **Devising Drama** 30% - Creating a piece of Drama from a stimulus. Internal performance or design assessment, with written portfolio coursework.
- **Presenting and Performing Texts** 30% - performance or design of a scripted group piece & a monologue for a visiting examiner with written pro forma coursework.
- **Performance and Response** 40% - written examination evaluating live theatre and a set text (play).

## CAREER OPPORTUNITIES:

Career prospects – Teacher, Actor, Playwright, Theatre / Television/ Film Director, Business, Project Management, Screenplay writer, Producer, dancer, Props Master, Choreographer, Set/Costume/Sound Designer, TV Extra. All jobs that require interpersonal skills and communication with others.

## PROGRESSION ROUTE:

A Level/BTEC: Drama & Theatre Studies, Performing Arts, Dance. University/Degree Level: Drama / Theatre Studies, Performing Arts, English, Acting, Musical Theatre, Dance, Media Studies, Education, Costume Design, Film Making.

FOR FURTHER INFORMATION: Speak to Mrs. Lord: Programme Leader of Drama [lordr@ca.rklt.co.uk](mailto:lordr@ca.rklt.co.uk)

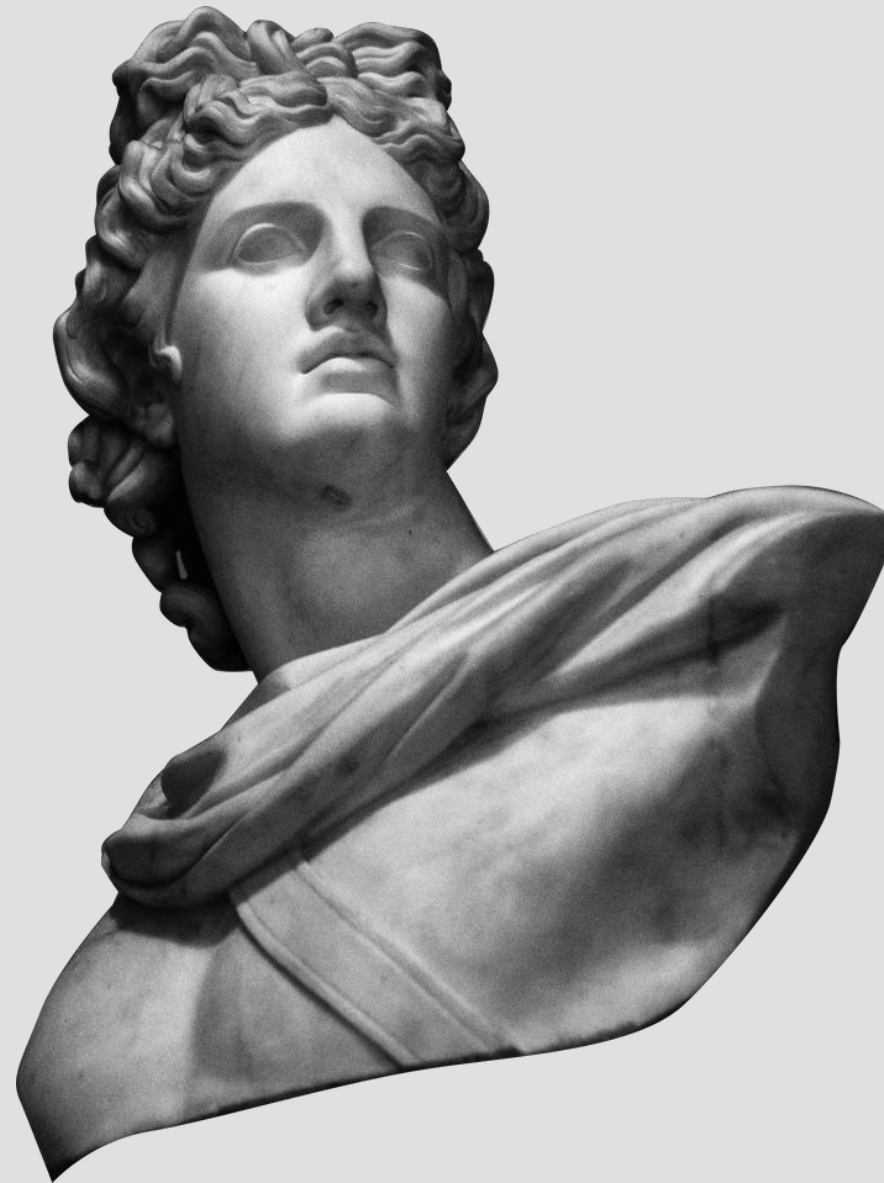
Web links: OCR <https://www.ocr.org.uk/qualifications/gcse/drama-j316-from-2016/>

[Back to subject menu](#)





# HUMANITIES SUBJECTS







# GCSE GEOGRAPHY (AQA)

[Back to subject menu](#)

## CONTENT:

- Natural hazards (including earthquakes, volcanoes, tropical storms and an extreme weather event in the UK).
- The living world (including tropical rainforests and hot deserts).
- Landscapes of the UK (including coastal landscapes and rivers).
- Urban issues and challenges (including challenges and opportunities in Rio de Janeiro and Leeds).
- The changing economic world (including development, aid and the economic future of the UK).
- Management of food, energy and water resources.

There will also be two fieldwork enquiries one physical and one human – these will be assessed in the paper 3 exam.

*We also run an annual 4-night residential visit to Sorrento, Italy which is only open to GCSE Geography students.*

## FOR FURTHER INFORMATION:

Speak to Mr Hand, Mrs Lewis, Mr Thompson or Miss Banks

## AIMS:

Geography helps to make sense of the world around you. The current GCSE course has a good mix of topics such as urban issues, world development, extreme environments and tectonic hazards – to name but a few. Geography is relevant for life in the 21<sup>st</sup> century and will give you the knowledge and skills for further education and employment. It also provides an opportunity to answer some of the big questions affecting our world today e.g. how do we respond to the threat of climate change? By the end of the GCSE, you will understand the socio-economic and physical processes shaping our world.

## PROGRESSION ROUTE:

Geography is a broad-based academic subject which will open options for you in the future. The GCSE can lead to Geography AS/A-Level, but also complements Science, History, Business, Mathematics, Economics and Sociology AS/A-Levels. Employers and universities see Geography as a robust academic subject rich in powerful knowledge. All universities place Geography on their list of 'facilitating' subjects.

## CAREER OPPORTUNITIES:

Geographers often enter a wide range of exciting and dynamic career paths. To put it simply there is no such thing as a geography job, rather there are jobs that geographers do. For this reason, Geography remains one of the most employable and impressive courses you can study at GCSE.

Examples of career pathways include law, business, marketing, teaching, architecture, politics, armed forces, police, travel and tourism industry and conversation.

## ASSESSMENT:

There are three exams to sit at the end of Year 11:

- **Paper 1:** Living with the physical environment 1 hour 30 minutes 35%
- **Paper 2:** Challenges in the human environment 1 hour 30 minutes 35%
- **Paper 3:** Geographical applications 1 hour 30 minutes 30%





# GCSE HISTORY (AQA)

## CONTENT:

### Paper 1

- Part A – A period study: Germany, 1890 - 1945: Democracy and Dictatorship
- Part B – A wider world depth study: Conflict and Tension, 1918 - 1939

### Paper 2

- Part A – A thematic study: Britain: Health and the People, c.1000 - present day
- Part B – A British depth study: Elizabethan England, c.1568 - c.1603
- There will also be a site study as part of the Elizabethan module. We complete a visit for this depending on the site study for your year group (the site studied changes annually).

We also plan to run our popular trip to Berlin which will be open to all GCSE History students.

We are also considering a residential to London for GCSE History students.

## FOR FURTHER INFORMATION:

Speak to Mrs Preston, Miss Hartley or your History teacher.

## AIMS:

History helps to develop your understanding of the past in order to apply this to the modern world. It is interesting, relevant, well-respected and enjoyable. We have chosen a specification that covers a diverse range of topics, so they can engage with key issues and understand how the past influences the present. It also develops key skills, such as critical thinking, analytical skills, forming an argument and developing their written communication.

## PROGRESSION ROUTE:

History is a very well respected, academic subject. It is an excellent preparation for all evaluative and academic subjects you could wish to study at post-16. History is considered to be rigorous and it is valued very highly by colleges, Sixth Forms and Universities. It is what is commonly known as a 'facilitating subject' meaning that it is accepted for all types of courses (not just for History).

## CAREER OPPORTUNITIES:

Historians frequently enter a wide range of exciting and dynamic career paths. There is no typical job for a History student to go on to as a background in History is applicable to so many different career options. History is one of the most employable and impressive courses to study at GCSE. Examples include: law, accountancy, business, media, marketing, teaching, politics, medicine and many, many more. No degree course or professional job would turn you down for having History GCSE.

## ASSESSMENT:

There are two exams to sit at the end of Year 11 with each of the four modules making up 25% of your final grade:

- Paper 1: Period study and wider world depth study, 2 hours
- Paper 2: Thematic study and British depth study, 2 hours

[Back to subject menu](#)





# GCSE RELIGIOUS STUDIES (AQA)

## CONTENT:

### **The Study of Religions (50%) :**

Students will study two religions (Buddhism and Christianity). They will study the beliefs, teachings and practices of these two religions. Topic areas in the Christianity section include the nature of God, beliefs surrounding the afterlife, the importance of pilgrimage and the different celebrations. Topic areas for Buddhism include the life of Buddha, ethical teachings, the importance of meditation and the belief of reincarnation.

### **A Philosophical and Ethical Study (50%) :**

Learners will study different philosophical and ethical arguments and their impact and influence in the modern world. There are four key themes: Crime and Punishment, Peace and Conflict, Relationships and Family, and Religion & Life.

**FOR FURTHER INFORMATION: Speak to Miss Lewis or Miss Ali**

Web links: <http://www.aqa.org.uk/subjects/religious-studies/gcse/religious-studies-a-8062>

## AIMS:

To encourage learners to develop knowledge, understanding and skills to engage in debate and discussion about life in a modern pluralistic society. This includes developing an understanding of non-religious beliefs.

**Qualification: AQA GCSE Religious Studies A**

## PROGRESSION ROUTE:

A level Sociology examines similar themes and here is also the option of studying Philosophy and Ethics at A level.

## CAREER OPPORTUNITIES:

The debating skills and written communication needed for this GCSE, as well as the mature approach needed, will all provide students with experience that can be applied later in life.

Ethics are a necessary module for veterinary and medical courses, and Philosophy is a well-respected Humanities subject at University.

[\*\*Back to subject menu\*\*](#)

## ASSESSMENT:

- PAPER 1: The Study of Religions (Buddhism and Christianity) - 1 hour 45 min exam (50%)
- PAPER 2: A Philosophical and Ethical study (A study of four philosophical and ethical themes) - 1 hour 45 min exam (50%)



# GCSE - MFL Languages - French

## AIMS:

To enable students of all abilities to develop their language skills  
To enable students to communicate in a variety of contexts with confidence  
To stimulate students' cultural knowledge

## Qualification:

1 full GCSE – Grade 9-1 - AQA examination board

## CONTENT:

You will learn the language for a range of topics from the following three themes:

- People and lifestyle
- Pop Culture
- Communication and the world around us

## FOR FURTHER INFORMATION:

Speak to: Your languages teacher

Weblinks: <https://www.aqa.org.uk/subjects/languages/gcse/french-8652/specification-at-a-glance>

## ASSESSMENT:

4 exams at the end of Y11 – each worth 25% of the GCSE

- Listening exam
- Reading exam
- Speaking exam – conducted by teacher / externally marked
- Writing exam

The speaking exam will be in May

## PROGRESSION ROUTE:

You will be able to take an A Level course in your target language if you achieve a Grade 6 or above at GCSE.

However, a foreign language GCSE is considered to be a valuable academic subject and well respected by colleges and universities as well as prospective employers. MFL is a fantastic option for those who are intending on applying to any competitive post-16 course. and will enhance your CV for employment-based post-16 routes.

## CAREER OPPORTUNITIES:

Learning another language can be helpful to you whether you are working somewhere abroad. There are loads of job opportunities available for those who speak more than one language e.g. in the fields of leisure & tourism, business, administration. However, people with language skills are more employable in general, whatever their choice of career.

[Back to subject menu](#)





# BUSINESS & COMPUTING



# BUSINESS

## APPLIED OPTION:

IF YOU ARE ALREADY STUDYING GCSE BUSINESS OR COMPUTING, YOU MAY **NOT** CHOOSE THESE COURSES AGAIN

[Back to subject menu](#)





# GCSE BUSINESS STUDIES (PEARSON)

## AIMS:

To inspire students to study business and develop a broad understanding of what it takes to build a business and the factors that influence it.

**Qualification:** Pearson (Edexcel) GCSE in Business

## CONTENT:

Unit 1: Investigating Small Business: This unit contains five separate sections designed to give students an understanding about how small businesses become successful:

- Spotting a Business Opportunity • Showing Enterprise and Entrepreneurship • Putting a Business Idea into Practice • Making the Business Effective • Understanding External Influences on Business

Unit 2: Building a business: This unit also covers five main topic areas that are designed to enable students to deepen their understanding on how a business can build itself following the start-up of a new business. The topics include:

- Growing the Business • Making Marketing Decisions • Making Operational Decisions • Making Financial Decisions • Making Human Resource Decisions

## ASSESSMENT:

100% of the overall mark is generated through two exams. Both exams are 90 minutes with a variety of multiple-choice, short- and extended questions.

## PROGRESSION ROUTE:

A level Economics, A level Business, BTEC Level 3 Business – Apprenticeships, the world of work and Universities

## CAREER OPPORTUNITIES:

Everyone works in a business, so it's good to know how they work as it provides the opportunity to follow any careers within businesses. It also enhances pupils understanding of different career routes and application processes.

## FOR FURTHER INFORMATION: Speak to Miss Akhtar

Weblink:

[http://qualifications.pearson.com/content/dam/pdf/GCSE/Business/2017/specification-and-sample-assessments/GCSE\\_Business\\_Spec\\_2017.pdf](http://qualifications.pearson.com/content/dam/pdf/GCSE/Business/2017/specification-and-sample-assessments/GCSE_Business_Spec_2017.pdf)

[Back to subject](#)



# GCSE COMPUTER SCIENCE (EDEXCEL)

## AIMS:

Computer Science develops problem-solving, computational thinking, and programming skills. It fosters creativity, digital literacy, and cybersecurity awareness, preparing students for future careers and responsible engagement in an evolving digital world.

**Qualification:** Pearson (Edexcel) GCSE in Computer Science

## CONTENT:

- **Computational Thinking, Algorithms, and Programming (Python Programming)** – Develop problem-solving skills through decomposition, abstraction, and algorithm design. Learn programming concepts such as variables, loops, functions, and data structures using Python. Explore searching and sorting algorithms, flowcharts, and pseudocode to build efficient solutions.
- **Computer Systems, Networks, and Cybersecurity** – Understand computer architecture, memory, and storage. Explore how networks function, including protocols, cybersecurity threats, and prevention methods. Learn about ethical, legal, and environmental impacts of computing. Gain insight into emerging technologies, data representation, and computational logic to develop a well-rounded understanding of modern computing.

## ASSESSMENT:

100% of the overall mark is generated through two exams. Both exams are 90 minutes. 1 written exam, the other a computer-based programming exam

## PROGRESSION ROUTE:

A Level Computer Science, Level 3 IT, Apprenticeships, the world of work and Universities

## CAREER OPPORTUNITIES:

Technology is ever changing, Computer Science unlocks careers in **software development, cybersecurity, AI, and gaming**, leading to limitless opportunities in technology, innovation, and problem-solving.

## FOR FURTHER INFORMATION: Speak to Mr. Middleton

Weblink:

[https://qualifications.pearson.com/content/dam/pdf/GCSE/Computer%20Science/2020/specification-and-sample-assessments/GCSE\\_L1\\_L2\\_Computer\\_Science\\_2020\\_Specification.pdf](https://qualifications.pearson.com/content/dam/pdf/GCSE/Computer%20Science/2020/specification-and-sample-assessments/GCSE_L1_L2_Computer_Science_2020_Specification.pdf)





# GCSE STATISTICS (PEARSON)

## AIMS:

Studying GCSE Statistics helps students understand how data is collected and used in real life. It teaches us how to organise information, draw graphs and charts, and calculate averages and probability. The subject helps us think logically and question whether data is reliable or biased, which is useful when looking at information in the news or online. GCSE Statistics also helps us make better decisions by understanding risk and uncertainty, supports our maths skills, and prepares us for further study and careers where data and problem-solving are important.

**Qualification: Pearson (Edexcel) GCSE in Statistics (1ST0)**

## CONTENT:

Students will learn these three main topics:

**The collection of data** (planning; types of data; population and sampling; collecting data)

**Processing, representing and analysing data** (diagrams and representation; measures of central tendency and dispersion; summary statistics; scatter diagrams and correlation; time series; estimation)

**Probability**

## ASSESSMENT:

100% of the overall mark is generated through two exams. Both exams are 90 minutes and have 80 marks available.

## PROGRESSION ROUTE:

A Level Mathematics and A level Statistics. GCSE Statistics would be helpful in preparation for A level Psychology, Geography, Biology and Economics.

## CAREER OPPORTUNITIES:

Statistics is used in a wide range of careers because many jobs rely on data to make decisions. Careers involving statistics include data analyst, statistician, and data scientist, who collect and analyse data to find patterns and trends. In science and medicine, statisticians help with research, clinical trials, and public health studies. Business and finance careers such as actuary, economist, market researcher, and financial analyst use statistics to assess risk, profits, and consumer behaviour. In technology and engineering, statistics supports quality control, modelling, and performance testing. Statistics is also important in psychology, sociology, education, sports analysis, government, and environmental science, where data is used to investigate issues and inform decisions.

**FOR FURTHER INFORMATION: Speak to Mr. Searle or Mr. Corrigan**

Weblink:

[gcse-9-1-statistics-specification.pdf](#)

[Back to subject menu](#)



# Compulsory Subjects







## The Key Stage 4 Curriculum

The Key Stage 4 Curriculum consists of a compulsory 'core', in which every student must study the core subjects of English, Mathematics and Science – these are crucial subjects in which to gain GCSEs or other certificates. The core curriculum in these subjects will produce five GCSE grades (six for Separate Science students).

The 'core' also includes the Applied Learning Specialism subject that each student began at the start of Year 9. There are no changes to these subjects, and they do not form part of the options process.

### Compulsory subjects

Subject	Number of <u>GCSEs</u>
English (Language and Literature)	2
Mathematics	1
Science	2 or 3 depending on pathway
Core PE	None-subject is not examined
Curriculum for Life ( <u>PSHE/RSE</u> )	None-subject is not examined

[Back to subject menu](#)

[English Language and Literature](#)

[Mathematics](#)

[Combined Science](#)

[Triple Science](#)



# GCSE ENGLISH LANGUAGE AND LITERATURE

## Aims:

To develop the skills students need to read, understand and analyse a wide range of different texts covering the 19th, 20th and 21st century time periods as well as to write clearly, coherently and accurately, using a range of vocabulary and sentence structures.

## How will I be assessed?

Both GCSE English Language and English Literature qualifications are tested 100% by exam. The exam takes place at the end of two years of study. All English Language exams are 'unseen' – you won't have read the texts prior to the exam. The Literature exams are closed book – this means you will not have the texts in the exams to refer to. This means that from the very beginning we will be:

- developing exam skills and technique
- working on the embedding of key knowledge in set texts
- reading and writing a variety of texts to prepare us for unseen exams
- maintaining excellent class and homework notes and building in revision of class and homework from day one.

### English Language

- Paper 1 - Written exam: 1 hour 45 minutes 80 marks (50% of GCSE)
- Paper 2 - Written exam: 1 hour 45 minutes 80 marks (50% of GCSE)

### English Literature

- Paper 1 – Written exam: 1 hour 45 minutes 64 marks (40% of GCSE)
- Paper 2 - Written exam: 2 hours 15 minutes 96 marks (60% of GCSE)

FOR FURTHER INFORMATION:

Speak to Mr Tompkinson and Mrs Button

[Back to subject menu](#)

### English Language

Paper 1: reading of a literature fiction text/descriptive or narrative writing

Paper 2: reading of a non-fiction text and a literary non-fiction text/writing to express a viewpoint

### English Literature

Paper 1: Study of a Shakespeare play and a 19th century novel. Students will write in detail about an extract and about the text as a whole.

Paper 2: Study of a modern novel or drama text, and a range of poetry. Students will answer an essay question and a comparative question on the poetry. In the final section, students will answer a question on an unseen poem and compare this to a second unseen poem.

### Progression routes and career opportunities

GCSE English Language is a compulsory entry requirement for the majority of colleges and universities and is almost always required by employers. The GCSE(s) will also prepare you for studying English further at A-Level and at university level too. Studying English beyond GCSE opens the door to many career paths including journalism, law, teaching, advertising, business.





# GCSE MATHEMATICS

## AIMS:

Mathematics teaches a number of vital skills that allow students to cope with the demands of the world, including the ability to think in abstract ways and an understanding of how to solve problems logically. Mathematics exists in many different aspects of life, including art, finance, economics, science and technology, and the course aims to foster a greater understanding of the part that mathematics plays in these areas. It also helps equip students with the level of numeracy needed to function in everyday situations.

## Qualification:

Students will be entered for GCSE Mathematics at either the Foundation Tier (grades available 1-5) or the Higher Tier (grades available 4-9). Tiers of entry will not be decided until the January of Y11.

Exam board:

<http://qualifications.pearson.com/en/qualifications/edexcel-gcses/mathematics-2015.html>

## Content:

GCSE Mathematics requires students to:

- Develop knowledge, skills and understanding of mathematical methods and concepts, including number, algebra, geometry, measures, probability and statistics.
- Use their knowledge and understanding to make connections between mathematical concepts.
- Apply the functional elements of mathematics in everyday life and real-life situations.

## How will I be assessed?

The exams will assess students' ability to recall, select and apply their knowledge of mathematics and to interpret, analyse and solve problems. The functional skills needed for real-life contexts are embedded into the course.

The course will be assessed by three exams at the end of Year 11 (one is a non-calculator exam). There is no controlled assessment for GCSE mathematics.

- Paper 1 - Written exam: 1 hour 30 minutes
- Paper 2 - Written exam: 1 hour 30 minutes
- Paper 3 - Written exam: 1 hour 30 minutes

FOR FURTHER INFORMATION:

Speak to: Mr Searle

[Back to subject menu](#)

## Progression routes and career opportunities

- The acquisition of a good grade at GCSE is vital for many lines of further study, including many not necessarily connected with the subject. If you get a good GCSE grade in mathematics, you might decide to take A level mathematics. Further mathematics can be taken at AS level. Level 3 Mathematical Studies (Core Maths) is designed for those students who gain a grade 4/5 in GCSE mathematics.
- Almost all jobs and careers require you to have mathematics GCSE but careers in areas such as banking, medicine, insurance, teaching, accountancy and computing all make a lot of use of mathematics.



# GCSE COMBINED SCIENCE

## AIMS:

Science has something to offer every student. Whether it be a trainee chef to a nuclear physicist, a construction apprentice to a cancer researcher, everyone needs some level of relevant science understanding.

**Qualification:** EXAM BOARD is AQA and successful completion of the course (Trilogy) results in 2 GCSE Numbered grades (1-9). *The two numbered grades achieved may be the same or different e.g 6,5 or 5,5. There are two tiers of entry in science.*

## Exam board:

<http://www.aqa.org.uk/subjects/science/gcse/combined-science-trilogy-8464>

## FOR FURTHER INFORMATION:

Speak to: YOUR SCIENCE TEACHER

[Back to subject menu](#)

## CONTENT:

A range of essential knowledge in Biology, Chemistry and Physics is covered including:

- Cell biology, Organisation, Infection and response, Bioenergetics, Homeostasis and response, Inheritance, Variation and evolution, Ecology
- Atomic structure and the periodic table, Bonding, Chemical structure, Chemical changes, Energy changes, Organic chemistry
- Forces, Energy, Waves and Electricity

## How will I be assessed?

This is a linear course, so all exams are taken at the **end of Y11**. There are 6 exams, 2 each in Biology, Chemistry and Physics of **1HR 15 MIN** duration. The questions range from multiple choice, structured, closed and open response.

There is no controlled assessment but there are required practicals for students to undertake that will be assessed in the final exams.

## Progression routes and career opportunities:

Good science grades can lead on to traditional A levels followed by a range of career opportunities. Essential practical and mathematical skills required for applied A levels, BTECs or apprenticeships are also taught within the course.

A levels in the Sciences can lead to a wealth of careers. E.g. Veterinary Science, Medicine, Journalism, Scientific research and development, Nanotechnology, Pharmacology, Nursing and Law to name just a few!





# GCSE TRIPLE SCIENCE (BIOLOGY, CHEMISTRY, PHYSICS)

## AIMS:

There are opportunities for further developing and deepening understanding the concepts covered in combined science. This pathway is appropriate for students who have a keen interest in science and aspire to a career in a science field.

**Qualification:** EXAM BOARD is AQA and successful completion of the courses results in 3 GCSE numbered grades (1-9). *The three numbered grades achieved may be the same or different. There are two tiers of entry in science.*

## Exam board:

[AQA | GCSE | Biology | Specification at a glance](#)

[AQA | GCSE | Chemistry | Specification at a glance](#)

[AQA | GCSE | Physics | Specification at a glance](#)

## CONTENT:

A range of essential knowledge in Biology, Chemistry and Physics is covered including:

- Cell biology, Organisation, Infection and response, Bioenergetics, Homeostasis and response, Inheritance, Variation and evolution, Ecology
- Atomic structure and the periodic table, Bonding, Chemical structure, Chemical changes, Energy changes, Organic chemistry
- Forces, Energy, Waves and Electricity

## How will I be assessed?

This is a linear course, so all exams are taken at the **end of Y11**. There are 6 exams, 2 each in Biology, Chemistry and Physics of **1HR 45 MIN** duration. The questions range from multiple choice, structured, closed and open response. There is no controlled assessment but there are required practicals for students to undertake that will be assessed in the final exams.

*Most students will follow the combined science pathway leading to two GCSE grades.*

*Students for whom the triple science pathway is deemed appropriate, will be selected by the science department.*

*For further information, speak to your science teacher or Mrs Clarke.*

[\*\*Back to subject menu\*\*](#)

## Progression routes and career opportunities:

Good science grades can lead on to traditional A levels followed by a range of career opportunities. Essential practical and mathematical skills required for applied A levels, BTECs or apprenticeships are also taught within the course.

A levels in the Sciences can lead to a wealth of careers. E.g. Veterinary Science, Medicine, Journalism, Scientific research and development, Nanotechnology, Pharmacology, Nursing and Law to name just a few!



**See our website for  
careers information.**

[Crawshaw Academy - Red Kite Learning Trust - Careers and Progression](#)